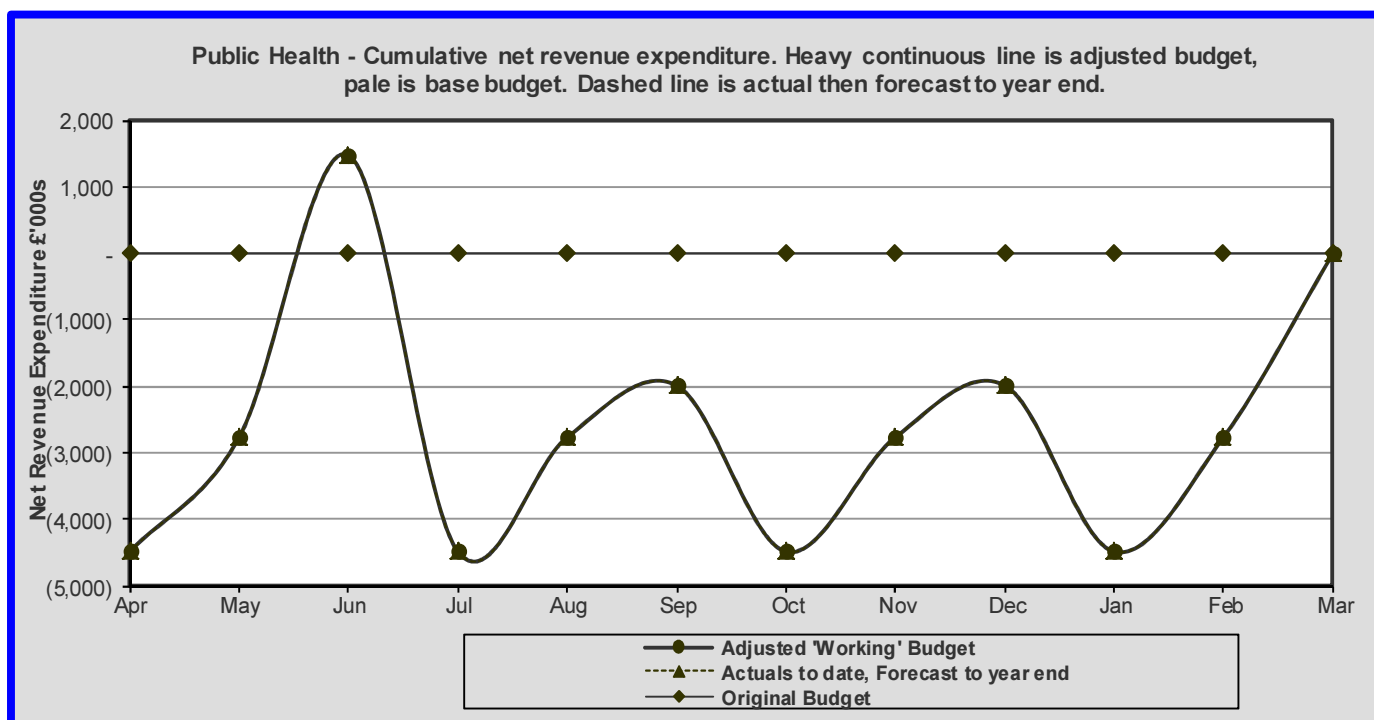


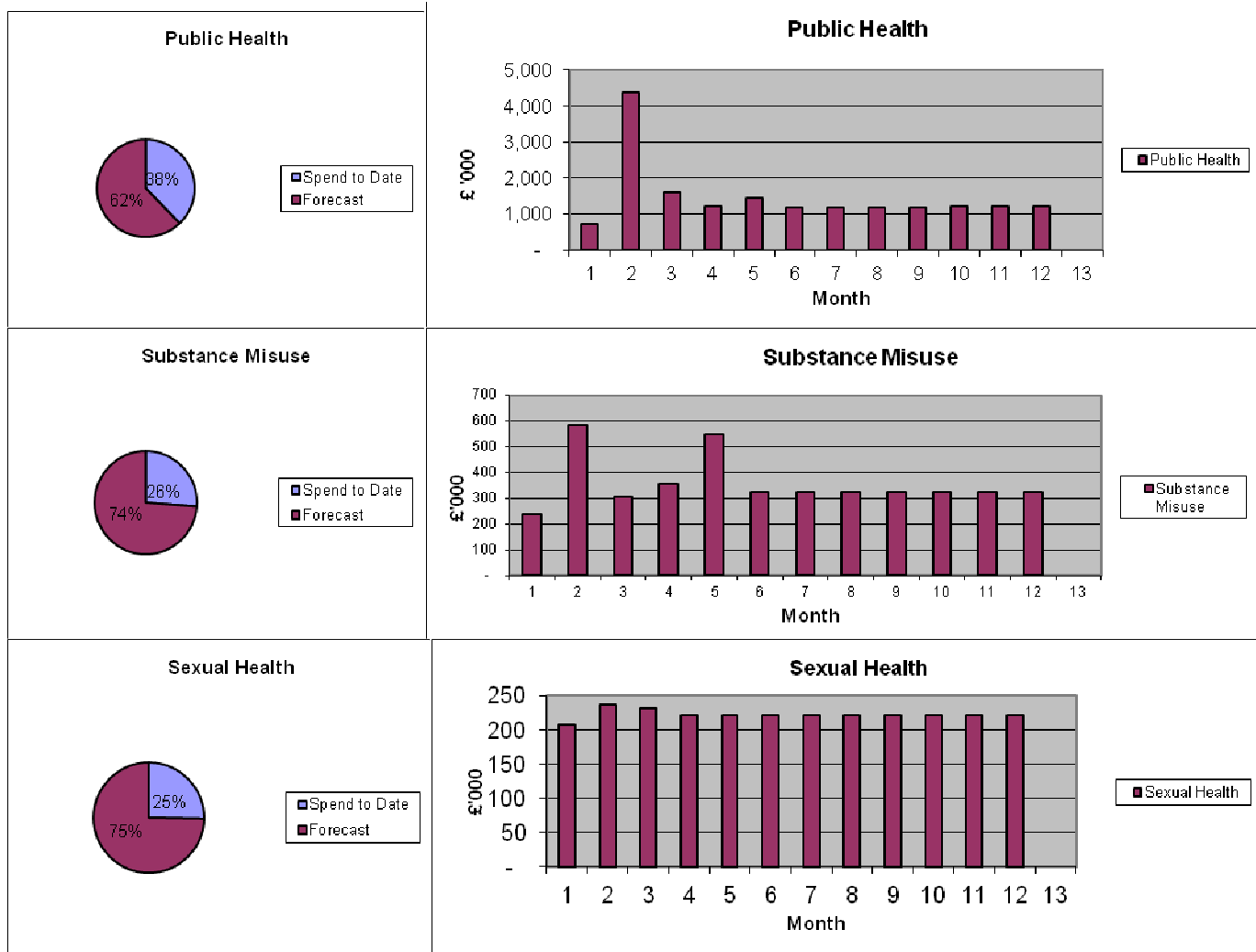
## Blackpool Council – Public Health

### Revenue summary - budget, actual and forecast:

FUNCTIONS OF THE SERVICE	BUDGET	EXPENDITURE			VARIANCE	2013/14 (UNDER)/OVER SPEND B/FWD £000
	ADJUSTED CASH LIMITED BUDGET £000	2014/15			F/CAST FULL YEAR VAR. (UNDER) / OVER £000	
		EXPENDITURE APR - JUN £000	PROJECTED SPEND £000	FORECAST OUTTURN £000		
<b>PUBLIC HEALTH</b>						
MANAGEMENT AND OVERHEADS	1,733	690	1,043	1,733	-	
NHS HEALTH CHECKS - MANDATED	255	11	244	255	-	
CHILDREN (0-19) - NCMP MANDATED	1,242	304	938	1,242	-	
HEALTH PROTECTION - MANDATED	94	3	91	94	-	
TOBACCO CONTROL	798	107	691	798	-	
MENTAL HEALTH AND WELLBEING	675	127	549	675	-	
SEXUAL HEALTH SERVICES - MANDATED	3,440	665	2,775	3,440	-	
FALLS PREVENTION / ACCIDENTS	183	53	130	183	-	
SUBSTANCE MISUSE (DRUGS AND ALCOHOL)	5,441	1,130	4,311	5,441	-	
HEALTHY WEIGHT/WEIGHT MANAGEMENT	540	127	413	540	-	
OTHER PUBLIC HEALTH SERVICES	745	-	745	745	-	
MISCELLANEOUS PUBLIC HEALTH SERVICES	2,800	2,750	50	2,800	-	
GRANT	(17,946)	(4,486)	(13,460)	(17,946)	-	
<b>TOTALS</b>	-	<b>1,480</b>	<b>(1,480)</b>	-	-	-

### Directorate revenue summary graph – budget, actual and forecast:





### **Commentary on the key issues:**

#### **Directorate Summary – basis**

The Revenue summary on the front page of this appendix lists the latest outturn projection for each individual scheme against their respective, currently approved budget. Forecast outturns are based upon actual financial performance for the first 3 months of 2014-15 together with predictions of performance, anticipated pressures and efficiencies in the remainder of the financial year, all of which have been agreed with the services leads

#### **Public Health Grant**

The Public Health Grant is a central government grant which is ring-fenced until March 2015 after which the grant will be based on a national formula. The allocation for 2014/15 is £17,945,700.

The grant conditions require quarterly financial reporting of spend against a prescribed set of headings and spend of the grant must link explicitly to the Health and Wellbeing Strategy, Public Health Outcomes Framework and Joint Strategic Needs Assessment

#### **Payment by Results (PbR)/ Activity-based Commissioning**

A number of Public Health schemes payments are linked to activity. The aim of Payment by Results (PbR) is to provide a transparent, rules-based system for payment. It rewards outputs, outcomes and support patient choice and diversity. Payment will be linked to activity. This does, however, raise a number of challenges when determining accurate budgetary spend/forecast spend.

#### **Summary of the Public Health Directorate financial position**

As at the end of June 2014, the Public Health Directorate is forecasting an overall spend of the full grant, £17,945,700, for the financial year to March 2015.

**Budget Holder – Dr Arif Rajpura, Director of Public Health**